



Straight Up Resources Inc. (CSE: ST) (OTCQB: STUPF) is a public company engaged in the business of mineral exploration and the acquisition of mineral property assets in North America. Ontario, Canada is home to our flagship properties which are located in the Red Lake Mining District, renowned for over 30 million ounces of historic gold production with other key projects extending along the same Greenstone Belt into the neighbouring Meen-Dempster Greenstone Belt of the Uchi Subprovince. Our management team is led by dedicated professionals with experience in modern exploration techniques and our tight share structure continues to help strengthen shareholder value.

#### Capalization Structure

|                      |            |
|----------------------|------------|
| Common Shares Issued | 42,839,720 |
| Warrants             | 15,876,149 |
| Options              | 2,050,000  |
| Full Diluted         | 60,765,869 |

## Management

### MARK BREZER CEO, President & Director

Mr. Mark Brezer is a successful businessman and holds a Geography/Geology degree from the University of Arizona. During his studies, emphasis was placed on Remote Sensing, GIS, Glaciation and Climate Change. Mr. Brezer has worked as a Project Manager and has overseen Quality Control, Environmental Monitoring and Safety Programs as related to road construction. Mr. Brezer's family has been passionate about mining and construction for decades and he has been actively involved in the research and investment of Junior Mining Companies for over 25 years

### DANIEL CRUZ Director & CFO

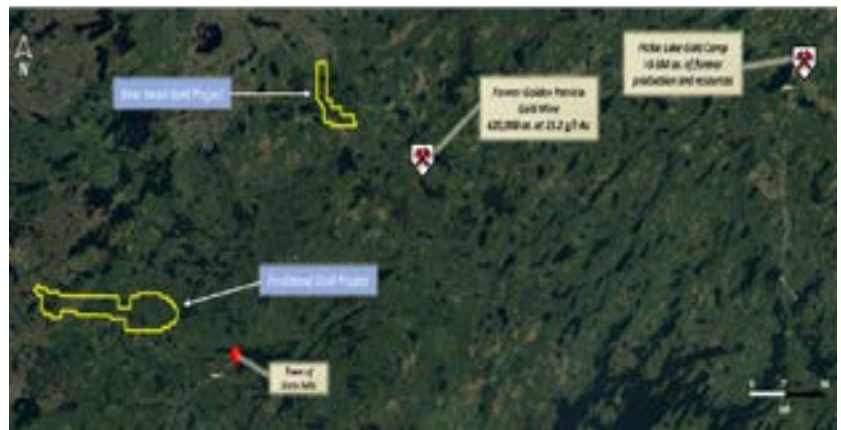
Mr. Cruz is an experienced financial industry professional having worked for 12 years as a senior investment advisor at Canadian Broker dealers where he gained experience in equity research, asset management, investor relations, corporate finance and venture capital. Financing Mining and Metals Issuers on all North American exchanges was a core focus of his clients' portfolio.

### MATTHEW COLTURA Director

Mr. Coltura is a businessman and has a Bachelor of Business Administration degree from Okanagan College where he specialised in finance. He has worked in the finance industry for over three years with a primary role in writing credit for potential borrowers in the industrial lending market.

## Bear Head Gold Project

- The Meen-Dempster Greenstone Belt is host to the Golden Patricia former gold mine which produced 620,000 ounces of gold at an average grade of 15.2 g/t Au from 1988-1997.
- The Dorothy Main gold deposit owned by Ardiden lies only 1km from the Bear Head Gold Project. The Dorothy Main gold deposit holds non-compliant historical resources of 46,600 ounces of gold at 6.17 g/t Au.
- Historical drilling in 1989 on the Bear Head Gold Project has recorded **11.09 g/t Au over 1.79m, 3.98 g/t Au over 2.3m and 3.08 g/t Au over 2.5m** associated with iron formation and silicified mafic volcanics. Gold values were shallow at <30m vertically. The above results have not been followed up on by additional drilling since 1989.



**Bear Head Gold Project comprises of 31 mining claims totaling 1,944 hectares in the Meen-Dempster Greenstone Belt of the Uchi Subprovince.**

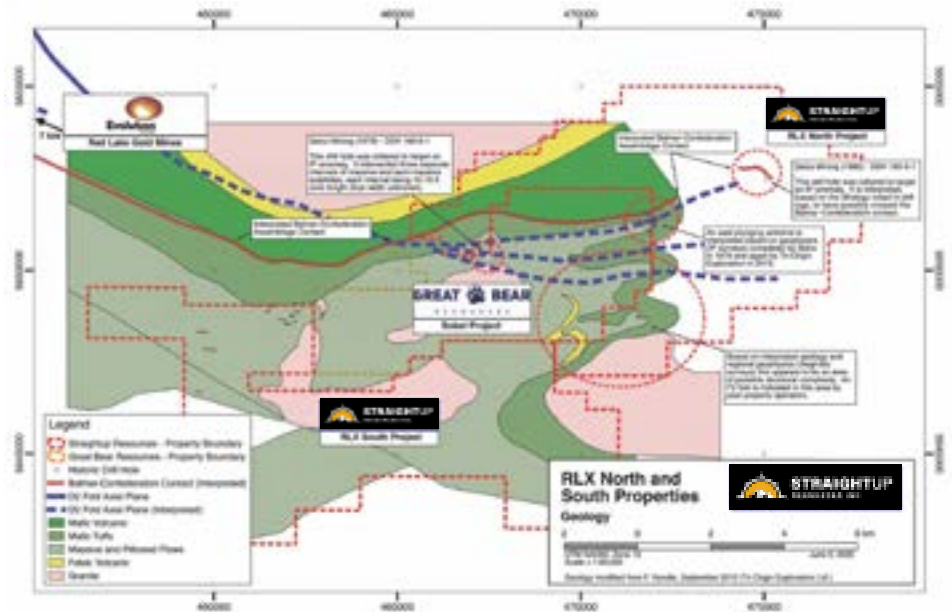
## RLX North & South Highlights

On-strike to the SE of the district's largest gold deposit (Red Lake Gold Mines – Evolution Mining).

Inferred presence of major lithological contacts and structural controls.

The project is adjacent to Great Bear Resources' Sobel Project. Great Bear Resources is also in the process of evaluating the area for significant regionalscale structural controls and has proposed additional work on their neighbouring project in the near term (see GBR news release dated September 9, 2020)

Highly accessible, the southern property boundary is only 8 km from the paved highway into Red Lake and can be accessed by forest service roads which traverse throughout the properties.



### 2021 EXPLORATION PROGRAM TO FOCUS ON:

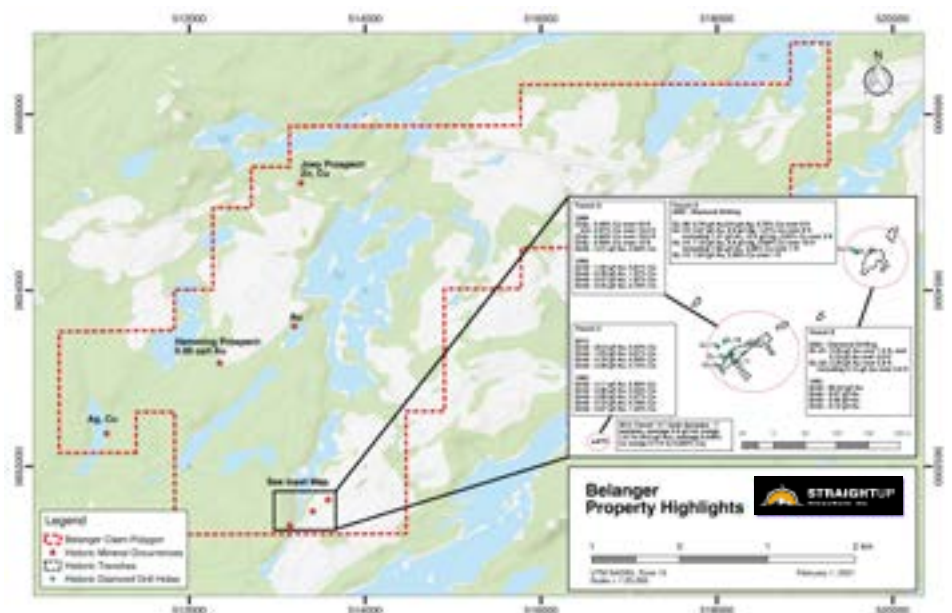
- Examine historical drill core (ENDM core library, Red Lake)
- Historical Data Review, Compilation & Interpretation
- Geological Mapping & Sampling
- Geophysical Surveys

## Belanger Highlights

Excellent forest road access from the town of Ear Falls

Historical exploration work (mechanical stripping, diamond drilling) on the 2,000-hectare property has identified a significant Au-Ag-Cu showing that is exposed on surface in three trenches along ~600 meters of strike:

- Gold values up to 60.44 g/t Au, copper values up to 5.47% Cu in selective grab samples.
- 7 grab samples collected from Trench "C" in 2012 averaged 6.8 g/t Au (range 1.01 g/t Au to 25.0 g/t Au) – notably, this trench has never been tested.
- 2020 chip samples returned values of 24.8g/t Au over 60cm, 6.21g/t Au over 20cm, 5.80g/t Au over 82cm at Trench "E" and grab samples up to 2.94g/t Au. Trench "C" chip samples returned 3.88g/t Au over 90cm, 1.97g/t Au over 40cm, and grab samples returned up to 2.36g/t Au.



### 2021 EXPLORATION PROGRAM TO FOCUS ON:

- Re-examine Areas of Mechanical Stripping & Bedrock
- Historical Data Review, Compilation & Interpretation
- Geological Mapping & Sampling
- Geophysical Surveys

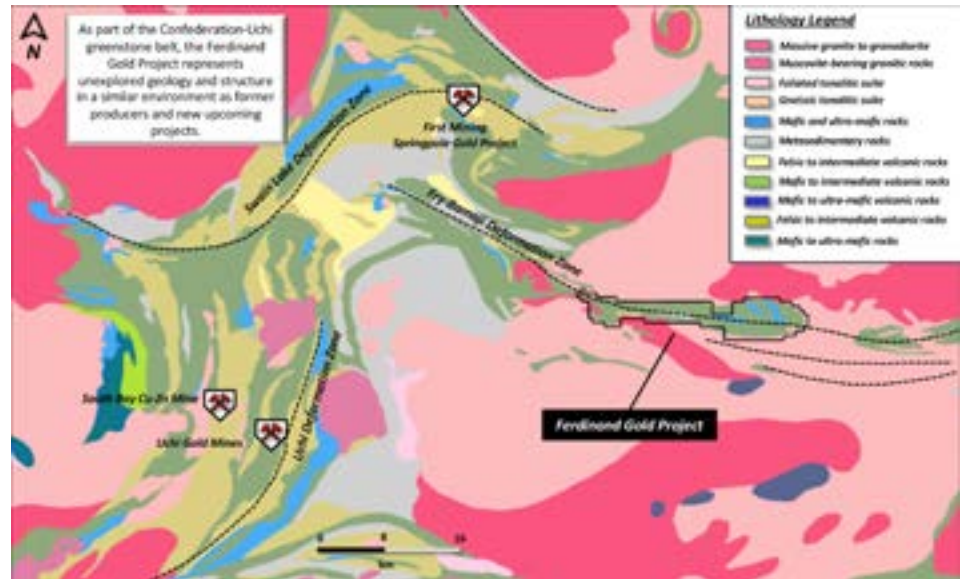
# Ferdinand Gold Project Highlights

Consists of 17 contiguous mining claims covering approx. 7,143 hectares

The project is located within the eastern extension of the Confederation-Uchi greenstone belt, one of the best metal endowed greenstone belts in the world:

- Property is 13 km NW of the town of Slate Falls. Access is currently by logging roads with forestry logging operations scheduled for expansion on property.
- The lack of access has played a major role in the limited exploration activity on the property. There isn't a single registered drill hole on the property, a stat hard to believe in such a renown greenstone belt.
- Crustal scale structural features such as the Fry-Bamaji deformation zone traverse the length of the property.
- Total magnetic intensity of the Ferdinand Gold Project display folded stratigraphy along D2 structures. These are important structural features that are important for gold-bearing hydrothermal fluids and traps. The Hinge Zone at Great Bear Resources Dixie Gold Project in the same geological environment to the west is a prime example of D2 structurally controlled gold deposition.

## FERDINAND PROPERTY REGIONAL GEOLOGY



## REGIONAL MINERAL OCCURRENCES



## FERDINAND REGIONAL TOTAL MAGNETIC INTENSITY

